

Subscribe

Share

Past Issues

Trans

Shoreline Rotaries help to "Raise the Roof"!

[View this email in your browser](#)



# Raise the Roof eNewsletter

## Shoreline Rotary Clubs Present \$15,000 Check Toward Raise the Roof's 11th Habitat for Humanity House



On January 17, Raise the Roof celebrated the groundbreaking of our eleventh Habitat for Humanity build at 603 Sherman Parkway in New Haven. This was

[Subscribe](#)[Share](#)[Past Issues](#)[Trans](#)

also a wonderful opportunity to celebrate the Rotary District 7980 Foundation's approval of a Matching Grant application for the Branford, Guilford, and Madison clubs. Each club donated \$2500 to Raise the Roof with these funds being matched by the District, which resulted in a total donation of \$15,000. (Read more [here](#).) The Rotary donations and matching grant, along with the volunteer construction labor of shoreline Rotarians, are providing a strong foundation for this new Habitat house, which will become the home of Kawusu and Ramatu Sheriff and their children.

Pictured above:

Front row - Kawusu Sheriff and daughters

Middle (left to right) - Gary Drake, Guilford Rotary Project Coordinator; John Sengstacken, Guilford Rotary President; Don Epperson, Sr., President, Raise the Roof Executive Committee; Ed Pellegrino, Madison Rotary President; Jim Satterwhite, Madison Rotary Club

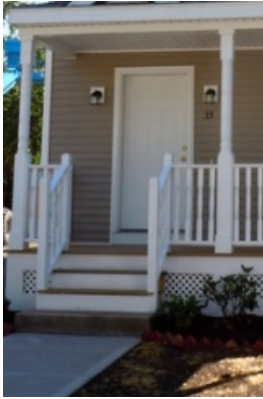
Back: David Chew, Branford Rotary President; Phil Carloni, Branford Rotarian



## Help Build this House

If you would like to participate on site at Sherman Parkway, we schedule groups for most Saturdays. You can volunteer through one of our regular Shoreline groups, e.g. a civic group, or as a Raise the Roof volunteer. Click [here](#) to get started.

Raise the Roof's financial commitment to sponsor the build of a Habitat for Humanity house is \$60,000. The above Rotary donation is a significant gift toward meeting the financial needs for this build. Donations and sponsorships from other Shoreline organizations and individuals, along with funds raised at events, such as Raise the Roof's November gala and our upcoming "[Build on the Guilford Green](#)", are also important components of fulfilling the financial requirements. If you would like to learn more about sponsorship, or if you'd like to have a Raise the Roof representative speak with your group about our mission and ways to be involved, contact [Mike Maguire](#). Please join us in this

[Subscribe](#)[Share](#)[Past Issues](#)[Trans](#)

## Donate a "House Part"

You can also be a part of this build by making a donation to "purchase a house part". Choose from levels of giving that represent some of the parts needed to build a house. Your donation will go toward building our current home and can be made in honor or memory of a friend or loved one. (When you purchase a house part, an acknowledgment card will be sent to the person or family you are honoring.)

Click [here](#) to purchase a house part. Thank you!

## SAVE THE DATE

MAY 16, 2015

## BUILD ON THE GUILFORD GREEN

A day of teamwork to raise funds and build walls for  
Raise the Roof's 11th Habitat for Humanity Build



**Subscribe**

**Share** ▾

**Past Issues**

**Trans**

We invite you to contact us at [raisetheroofhomes@gmail.com](mailto:raisetheroofhomes@gmail.com) if you would like to be part of organizing our Build on the Guilford Green. We also have other fundraising, marketing, P.R. and organizational needs throughout the year. We welcome volunteers with any skills or interests to contact us. We look forward to working with you!

Our success depends on your continued support, so please spread the word and follow us!



Facebook



Twitter



Website

*Copyright © 2015 Raise the Roof, All rights reserved.*

[unsubscribe from this list](#) [update subscription preferences](#)

*MailChimp.*